

2018

DYNAMOMETER CATALOG



Dynojet[®]

AUTOMOTIVE DYNAMOMETERS ■ POWERSPORTS DYNAMOMETERS
ACCESSORIES | HARDWARE | SOFTWARE AND TUNING



TABLE OF CONTENTS

MODEL 224x	PAGE 4-5
MODEL 224xLC	PAGE 6-7
MODEL 424x	PAGE 8-9
MODEL 424xLC²	PAGE 10-11
UPGRADES AND OPTIONS	PAGE 12-17
MODEL 200i	PAGE 18-19
MODEL 250i	PAGE 20-21
MODEL 200iX	PAGE 22-23
MODEL 250iX	PAGE 24-25

SD12 SCOOTER DYNAMOMETER PAGE 26

UPGRADES AND OPTIONS PAGE 27-31

PRODUCTS AND LICENSES PAGE 32-33

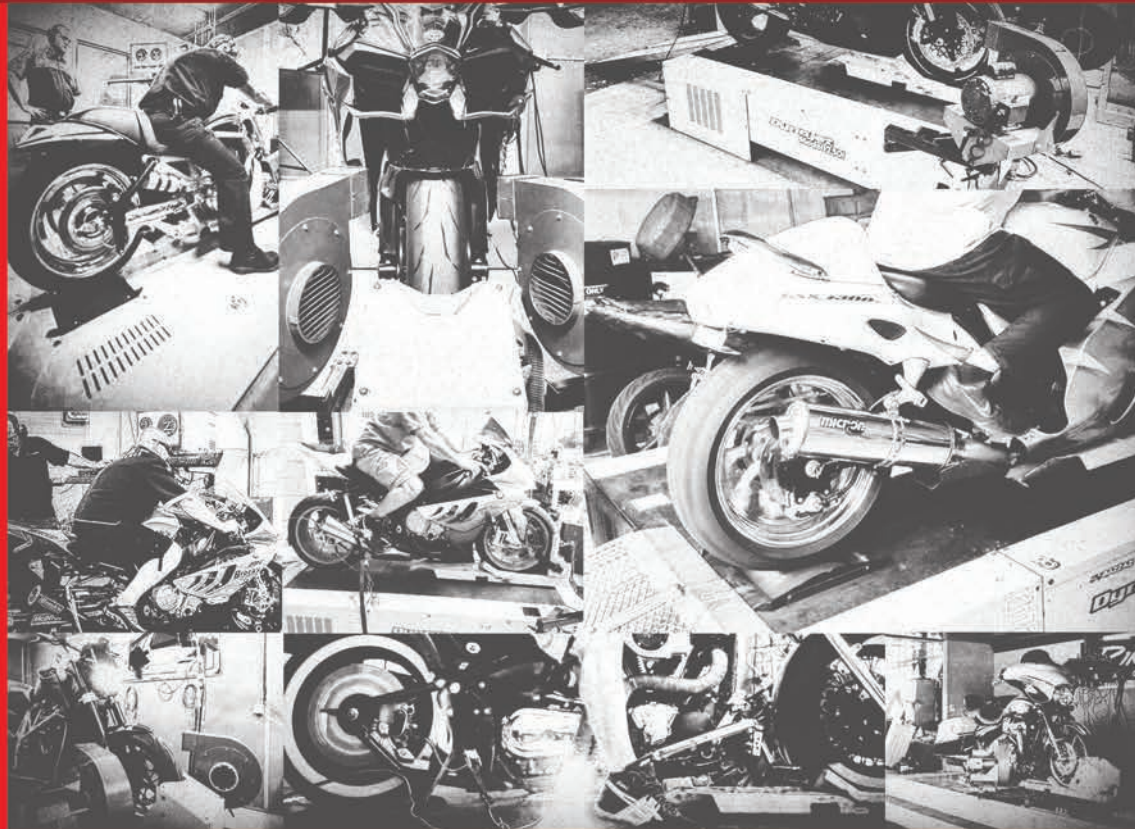
DYNOWARE RT HARDWARE PAGE 34-35

POWERCORE SOFTWARE PAGE 36

WINPEP 8 PAGE 37

C3 SOFTWARE PAGE 38

TRAINING AND CERTIFICATIONS PAGE 39





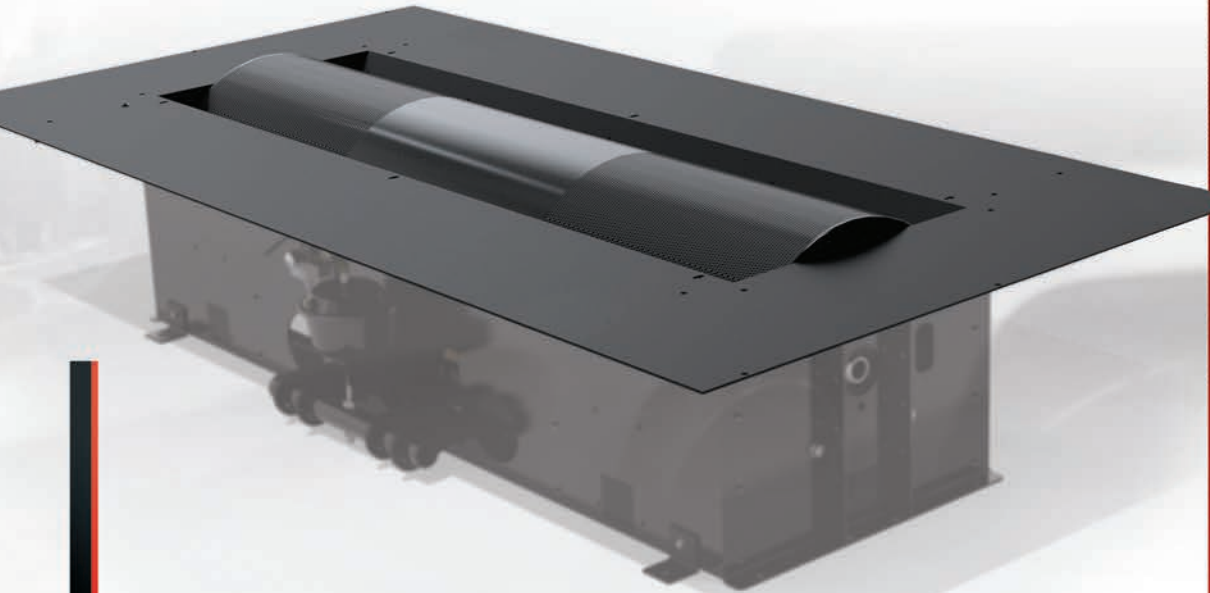
MODEL 224x CHASSIS DYNAMOMETER

The Dynojet Automotive Model 224x Dynamometer features a 24in knurled, precision balanced drum. The large drum diameter provides a virtually flat, stable surface for tire contact, eliminating unnecessary slippage and tire deformation. The result is precise, repeatable results every time.

The Model 224x is rated at 2000+ hp, 2000 ft/lbs torque and up to 200 mph making it perfect for diagnosing engine and driveline problems, tuning, and repair on most street driven vehicles.



SHOWN WITH OPTIONAL ABOVE GROUND KIT



FEATURES

- MEASURES UP TO 2,000+ HP / TORQUE AND UP TO 200 MPH
- POWERCORE SOFTWARE SUITE WITH WINPEP 8 TO INTERFACE (PC, PRINTER, ETC. NOT INCLUDED)
- DYNOWARE RT DYNAMOMETER ELECTRONICS AND HARDWARE
- AIR ACTUATED BRAKE SYSTEM
- PIT OR ABOVE GROUND CONFIGURATIONS AVAILABLE
- UPGRADABLE TO 224xLC, 224xLC², 424x, 424xLC and 424xLC².

TOLL FREE 1-800-992-3525

SPECIFICATIONS

MAXIMUM HORSEPOWER/TORQUE	2000+ HP/2000+ FT. LBS
MAXIMUM SPEED	200 MPH/322 KPH
WHEELBASE MINIMUM	N/A
WHEELBASE MAXIMUM	N/A
DRUMS	1
DRUM DIAMETER	24 IN/61 CM
DRUM WIDTH	81 IN/205 CM
MAXIMUM AXLE WEIGHT	3000 LBS/1361 KG
AIR REQUIREMENTS	100 PSI
OPERATING TEMP RANGE	32 TO 158 F/0 TO 70 C
TIMING ACCURACY	+/-1 MICROSECOND
DRUM SPEED ACCURACY	+/-1/100TH MPH
RPM ACCURACY	+/-1/10TH RPM
POWER REQUIREMENTS	120 VOLT, 15AMP, & SINGLE PHASE





MODEL 224xLC LOAD CONTROL DYNAMOMETER

THE DYNOJET LOAD CONTROL SYSTEM IS DESIGNED FOR EASE OF USE, ALLOWING YOU TO SPEND MORE TIME TUNING VEHICLES, AS OPPOSED TO TUNING YOUR DYNO.

The highly versatile Model 224xLC is the perfect choice for modern EFI Tuning Shops. Based on the 224x dyno, the 224xLC offers the simplicity and ease of use of an inertia only dyno, along with advanced testing capabilities of a Eddy Current load style dyno. Perform A-to-B comparison tests to quantify gains from various performance products, or enable the load control feature to perform step, sweep, or road load simulations.

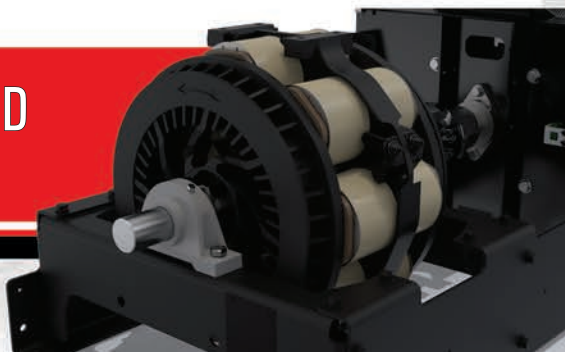
FOR MORE INFO VISIT: WWW.DYNOJET.COM

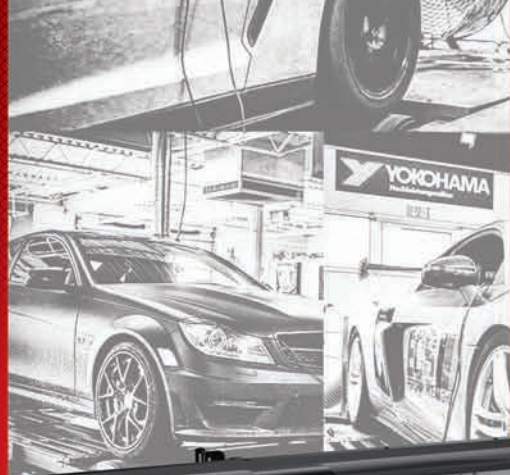
SPECIFICATIONS

MAXIMUM HORSEPOWER/TORQUE	2000+ HP/2000+ FT. LBS
MAXIMUM SPEED	200 MPH/322 KPH
WHEELBASE MINIMUM	N/A
WHEELBASE MAXIMUM	N/A
DRUMS	1
DRUM DIAMETER	24 IN/61 CM
DRUM WIDTH	81 IN/205 CM
MAXIMUM AXLE WEIGHT	3000 LBS/1361 KG PER AXLE
AIR REQUIREMENTS	100 PSI
OPERATING TEMP RANGE	32 TO 158 F/0 TO 70 C
TIMING ACCURACY	+/-1 MICROSECOND
DRUM SPEED ACCURACY	+/-1/100TH MPH
RPM ACCURACY	+/-1/10TH RPM
POWER REQUIREMENTS	120 VOLT, 15AMP, SINGLE PHASE AND 240 VOLT, 30AMP, SINGLE PHASE

FEATURES

- MEASURES 2,000+ HP / TORQUE AND UP TO 200MPH
- POWERCORE SOFTWARE SUITE WITH WINPEP 8 TO INTERFACE (PC, PRINTER, ETC. NOT INCLUDED)
- DYNOWARE RT DYNAMOMETER ELECTRONICS AND HARDWARE
- EDDY CURRENT LOAD ABSORPTION UNIT TO PERFORM LOADED TESTS, INCLUDING STEP, SWEEP, AND ROAD LOAD SIMULATIONS
- PIT OR ABOVE GROUND CONFIGURATIONS AVAILABLE
- UPGRADABLE TO 224xLC², 424xLC and 424xLC².

EDDY CURRENT LOAD
ABSORPTION UNIT



MODEL 424x AWD CHASSIS DYNAMOMETER

The Model 424x is comprised of two industry standard 224x dyno base units. Horsepower and torque are measured at each drum and can be displayed and/or logged either independently or combined. This feature allows you to assess the vehicle's power split, and can also aid in troubleshooting drivetrain issues. The 424x is designed to grow with you as your testing needs expand in the future.

Dynojet's AWD dynos can accommodate up to a 140in wheelbase with just the touch of a button. Whether you are troubleshooting a 4-wheel drive pickup or tuning an all wheel drive vehicle, this is a system you should seriously consider.



YOU CAN EASILY UPGRADE AT ANY POINT WITH DUAL EDDY CURRENT LOAD ABSORPTION UNITS AND/OR THE 424 LINX SYSTEM

FEATURES

- MEASURES 2,000+ HP / TORQUE AND UP TO 200MPH
- TESTS VEHICLES IN EITHER TWO-WHEEL OR ALL-WHEEL DRIVE MODES, BI-DIRECTIONAL ROTATION
- POWERCORE SOFTWARE SUITE WITH WINPEP 8 TO INTERFACE (PC, PRINTER, ETC. NOT INCLUDED)
- DYNOWARE RT DYNAMOMETER ELECTRONICS AND HARDWARE
- AIR ACTUATED BRAKE SYSTEM
- ELECTRONICALLY CONTROLLED WHEELBASE ADJUSTMENT FROM (STANDARD 88 IN — 130 IN OR OPTIONAL 98 IN — 140 IN)
- PIT OR ABOVE-GROUND CONFIGURATIONS AVAILABLE
- UPGRADABLE TO 424xLC and 424xLC².



TOLL FREE 1-800-992-3525

SPECIFICATIONS

MAXIMUM HORSEPOWER/TORQUE	2000+ HP/2000+ FT. LBS
MAXIMUM SPEED	200 MPH/322 KPH
DRUM ADJUSTABLE WHEELBASE FROM	
STANDARD	88 IN/224 CM TO 130 IN/330 CM
OPTIONAL	98 IN/249 CM TO 140 IN/356 CM
DRUMS	2
DRUM DIAMETER	24 IN/61 CM
DRUM WIDTH	81 IN/205 CM
MAXIMUM AXLE WEIGHT	3000 LBS/1361 KG PER AXLE
AIR REQUIREMENTS	100 PSI
OPERATING TEMP RANGE	32 TO 158 F/O TO 70 C
TIMING ACCURACY	+/-1 MICROSECOND
DRUM SPEED ACCURACY	+/-1/100TH MPH
RPM ACCURACY	+/-1/10TH RPM
POWER REQUIREMENTS	120 VOLT, 15AMP, & SINGLE PHASE



**AUTOMOTIVE
INERTIA ONLY DYNAMOMETER**

MODEL 424xLC² DUAL LOAD CONTROL DYNAMOMETER

The 424xLC² is a versatile AWD chassis dyno that offers unparalleled features. At any time you can operate the dyno in inertia only mode for assessing gains from bolt-on modifications or utilize the dual eddy current absorbers for advanced load testing. The wheelbase is adjustable with the touch of a button and can handle all popular AWD vehicles on the road today.

Along with offering the precise control from the eddy current load absorption units, the system also eliminates any potential speed bias between the two drums with Speed Balance Technology. You can also easily upgrade to the 424 LINX System at any time for a complete, all-in-one testing solution.

YOU CAN EASILY UPGRADE AT ANY POINT
WITH THE 424 LINX SYSTEM

SHOWN WITH OPTIONAL ABOVE GROUND KIT



FEATURES

- MEASURES 2,000+ HP / TORQUE AND UP TO 200MPH
- TESTS VEHICLES IN EITHER TWO-WHEEL OR ALL-WHEEL DRIVE MODES, BI-DIRECTIONAL ROTATION
- TWO EDDY CURRENT LOAD ABSORPTION UNITS FOR PERFORMING LOADED TESTS, INCLUDING STEP, SWEEP, AND ROAD LOAD SIMULATIONS
- POWERCORE SOFTWARE SUITE WITH WINPEP 8 TO INTERFACE (PC, PRINTER, ETC. NOT INCLUDED)
- DYNOWARE RT DYNAMOMETER ELECTRONICS AND HARDWARE
- ELECTRONICALLY CONTROLLED WHEELBASE ADJUSTMENT FROM (STANDARD 88 IN – 130 IN OR OPTIONAL 98 IN – 140 IN)
- PIT OR ABOVE-GROUND CONFIGURATIONS AVAILABLE

FOR MORE INFO VISIT: WWW.DYNOJET.COM

SPECIFICATIONS

MAXIMUM HORSEPOWER/TORQUE 2000+ HP/2000+ FT. LBS
MAXIMUM SPEED 200 MPH/322 KPH

DRUM ADJUSTABLE WHEELBASE FROM

STANDARD 88 IN/224 CM TO 130 IN/330 CM
OPTIONAL 98 IN/249 CM TO 140 IN/356 CM

DRUMS 2

DRUM DIAMETER 24 IN/61 CM

DRUM WIDTH 81 IN/205 CM

MAXIMUM AXLE WEIGHT 3000 LBS/1361 KG PER AXLE

AIR REQUIREMENTS 100 PSI

OPERATING TEMP RANGE 32 TO 158 F/0 TO 70 C

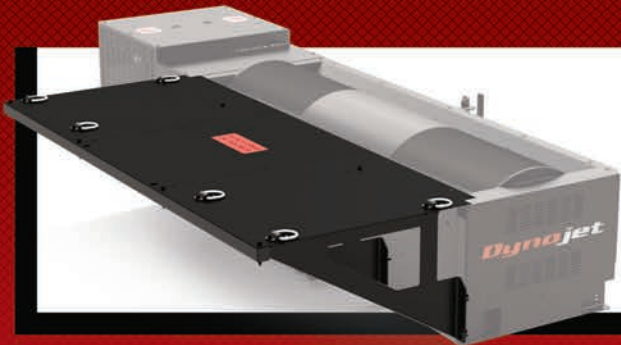
TIMING ACCURACY +/-1 MICROSECOND

DRUM SPEED ACCURACY +/-1/100TH MPH

RPM ACCURACY +/-1/10TH RPM

POWER REQUIREMENTS 120 VOLT, 15AMP, SINGLE PHASE AND
(2X) 240 VOLT, 30AMP, SINGLE PHASE





ABOVE GROUND PLATFORM KIT

The Above Ground Platform Kit when used in conjunction with a four-post lift, allows you to make changes to exhaust, gears, driveshafts and other drivetrain modifications right on the dyno during test sessions. *4 post lift sold separately.*

4 POST LIFT

Dynojet acts as a liaison to provide you with the proper 4 post application. Any technical questions should be directed to Rotary at 800-532-6973.

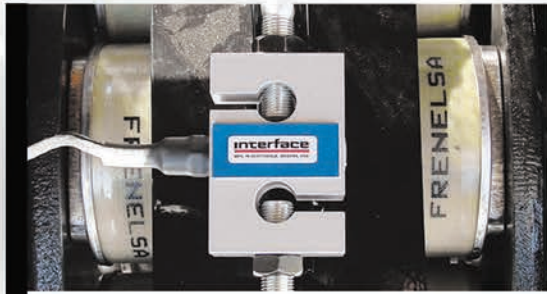


PIT COVERS

Pit Covers shield open areas of pits, exposing the rollers only. This option is a standard feature for Model 424x and Model 424xLC² and available for all other Dynojet Dynamometer Models to upgrade.

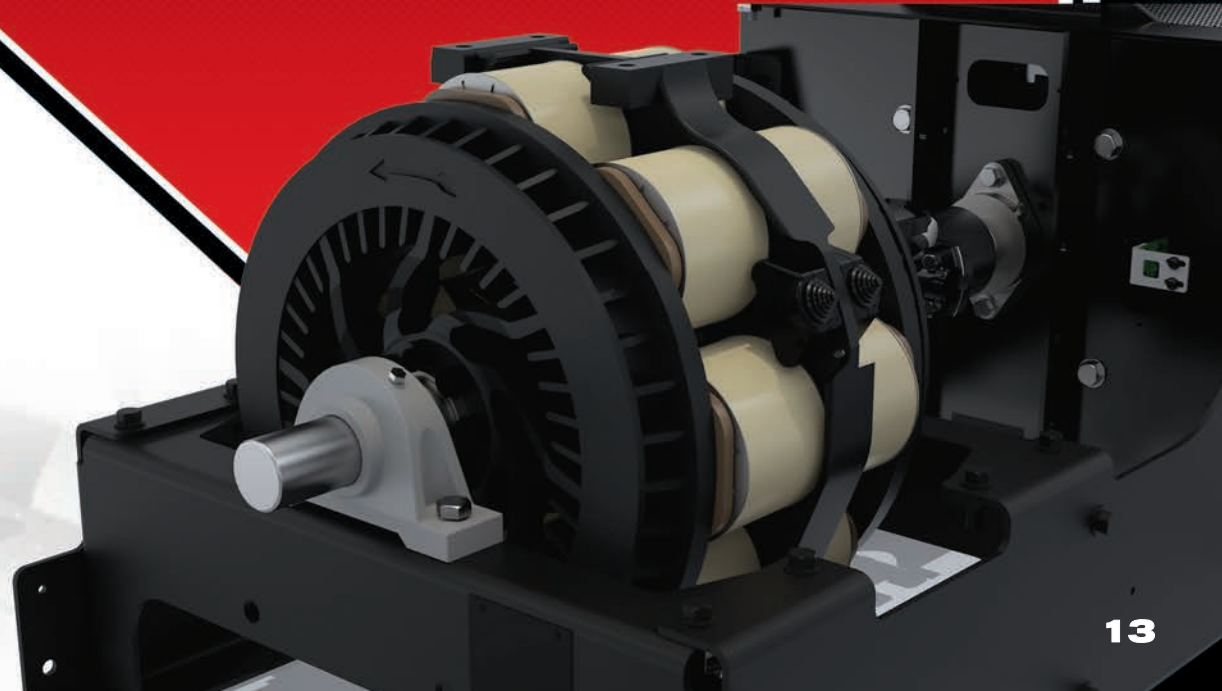
EDDY CURRENT LOAD CONTROL

When performing loaded testing, the Eddy Current Load Control option utilizes an integrated Torque Cell to quantify power absorption in an ultra precise and consistent manner. Loaded test files are then available for review and analysis in the WinPEP 8 software. During a steady state test the dynamometer operator can view torque in real time, a great feature when performing live ECM tuning. Additional highlights of this system include a quick and effective calibration routine that can be accomplished in under a minute.



TORQUE CELL MODULE

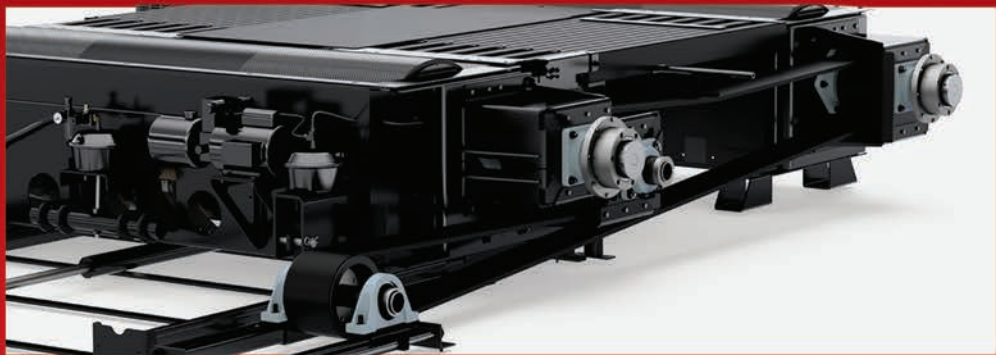
Measures real-time torque, and allows sweep, step and custom load simulation tests.





424 LINX SYSTEM

The Dynojet 424 LINX System is a simple, highly efficient design that incorporates a high speed Multi-V Rib belt and pulleys that eliminates potential speed differentials between the dyno drums. This technology will allow you to test modern AWD vehicles without the fear of potentially damaging the center differentials, or activating intrusive stability control systems. It is also useful for those 2WD performance vehicles that require all four wheels to be rotating in order to avoid reduced power mode. The 424 LINX will also retain the full flexibility of your 424x. The LINX System is easy to connect/disconnect for switching between 2WD or AWD applications.



SPECIFICATIONS

MAXIMUM SPEED

180 MPH



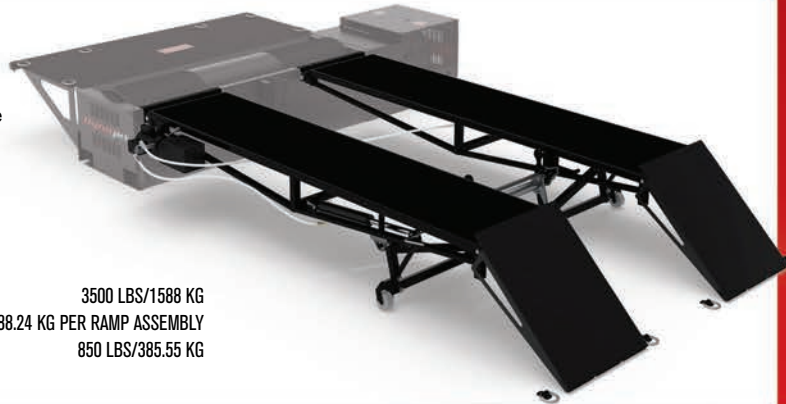
224x AWD ATTACHMENT

The most versatile option, the 224x AWD attachment can be added to any existing Dynojet 224x or 224xLC dynamometer to make it all-wheel-drive capable. Horsepower and torque are measured at each drum and can be displayed and/or logged independently, or combined. This attachment results in a system that can accommodate wheelbases from 88in to 140in with just the touch of a button. The 224x AWD Attachment is available in an above ground or pit configuration when upgrading from a 224x or 224xLC models.

MAXIMUM HORSEPOWER	2000+ HP (PER DRUM)	DRUM WIDTH	81 IN/206 CM
MAXIMUM SPEED	200MPH/322KPH	MINIMUM AXLE WIDTH	N/A
MAXIMUM TORQUE	2000+ FT/LBS (PER DRUM)	MAXIMUM AXLE WIDTH	81 IN/206 CM
DRUMS	2	MAXIMUM AXLE WEIGHT	3000LBS/1120KG
WHEELBASE MINIMUM	88 IN/224 CM	DRUM ADJUSTABLE WHEELBASE FROM	
WHEELBASE MAXIMUM	140 IN/356 CM	STANDARD	88 IN/224 CM TO 130 IN/330 CM
DRUM DIAMETER	24 IN/61 CM	OPTIONAL	98 IN/249 CM TO 140 IN/356 CM

DYNOJET POWER-RAMP

The Power-Ramps are used with 224x/224xLC Models and provide a unique alternative to a four-post lift. Unlike non-powered ramps, the Power-Ramps raise and lower the vehicle to the height of the dyno. This keeps vehicles level on the dyno, allowing for shorter ramp platforms and saves 8.5ft of floor space when compared to a traditional four-post lift! The ramps are securely attached to the dynamometer and are controlled by a push-button hydraulic system. Additionally the ramps are powder coated with an anti-slip surface for optimal traction. The Power-Ramps are suited for vehicles with a maximum wheelbase of 132in.



TOTAL LENGTH	55 IN/393.7 CM	MAXIMUM WEIGHT PER VEHICLE AXLE	3500 LBS/1588 KG
TOTAL WIDTH	83 IN/210.82 CM	APPROXIMATE TOTAL WEIGHT	415 LBS/188.24 KG PER RAMP ASSEMBLY
WIDTH (EACH RAMP)	26.5 IN/67.31 CM	TOTAL RAMP WEIGHT	850 LBS/385.55 KG
APPROACH ANGLE	8°		

FOR MORE INFO VISIT: WWW.DYNOJET.COM

AFR-2 (DUAL AIR/FUEL SYSTEM)

AFR-2 MODULE MEASURES UP TO TWO AIR/FUEL RATIO READINGS SIMULTANEOUSLY!

The AFR-2 has two wide band O₂ sensor inputs so you can sample two air/fuel ratios at the same time for measuring bank-to-bank. The AFR-2 uses the DJ-CAN system, which allows you to daisy-chain multiple AFR-2 modules to read as many AFR's as you need. The AFR-2 houses the Gen4 air pump system and comes standard with one O₂ sensor. Additional sensors can be purchased at a low cost.



ANALOG CHANNEL ACCESSORIES

Analog Channel Accessories Analog Sensor Cable Kit (Used for connecting customer supplied 0-5v sensors to DynoWare RT Main Control Module – includes 4 harness kits).

Analog Sensor Cable Kit — Includes four (4) complete harnesses for connecting up to four customer supplied 0-5v analog sensors to DynoWare RT.



-14.7-45psi Pressure Sensor Kit — Includes one (1) sensor and harness
0-100psi Pressure Sensor Kit — Includes one (1) sensor and harness.



EZ-RPM MODULE

Receive RPM signal by plugging into cigarette/ accessory power port or connect to positive/ negative battery posts for RPM signal.



OBDII DATA-LINK INTERFACE

The OBDII Data Link plugs directly into the vehicle's OBDII port and brings data from the vehicle's ECM directly into DynoWare RT. Designed for use with 2008+ US Spec (ISO 15765) 255+kpbs CAN based vehicle ECM's, you can use the OBDII engine RPM channel as your dyno's primary RPM signal! Data can be viewed in real-time and saved with the dyno graph. Comes with 1 wideband oxygen sensor. Second sensor not included.



IR-TEMP SENSOR KIT

Includes 1 0-500F sensor, magnetic base and mounting stand.



OPTICAL RPM PICKUP

Includes magnetic base, optical sensor and reflective tape. Recommended when testing diesel engine vehicles.

Allows RPM pickup from any engine where a rotating component can be seen (crank balancer, etc).



O2 SENSOR KITS

Includes one wideband O2 sensor with harness for use with AFR-2 for dual air/fuel readings. Available in a 6 ft or 12 ft harness length.

O2 Sensor Test Gas Kit available.



TOLL FREE 1-800-992-3525

MODEL 200i CHASSIS DYNAMOMETER

The Model 200i continues the Dynojet tradition of providing a reliable, repeatable, consistent and easy to use chassis Dyno for a quick and accurate diagnosing of performance problems. The Model 200i offers an improved operator interface through the use of the integrated control console, PowerCore Software Suite and a wider platform for easy loading and unloading. Shop sales, service work and credibility all benefit with a Dynojet chassis dynamometer.

A great feature of the 200i is that it can easily be upgraded to the Model 200ix, 250i, or 250iX at any time. This is especially important to a NEW business. They can begin with the 200i and upgrade as their business grows.





FEATURES

ABOVE GROUND STANDARD FEATURES

- MEASURES 750+ HP / TORQUE AND UP TO 200MPH
- POWERCORE SOFTWARE SUITE WITH WINPEP 8 (PC, MONITOR, PRINTER, ETC. NOT INCLUDED)
- DYNOWARE RT DYNAMOMETER ELECTRONICS AND HARDWARE
- 14 EXPANSION PORTS FOR DYNOWARE RT ACCESSORIES AND DJ-CAN DEVICES (SUCH AS POWER COMMANDER, POWER VISION, AUTOTUNE, ETC.)
- POWDER COATED CHASSIS, WHEELBASE CAPABILITY UP TO 84 IN (FROM FRONT TIRE TO REAR AXLE)

- INTEGRATED CONTROL PANEL STAND WITH CONSOLE
- IGNITION WIRE INDUCTIVE TACHOMETER PICKUP LEADS
- FRONT WHEEL LOCK
- STARTER SYSTEM TO SPIN ROLLER (12V, BATTERY NOT INCLUDED)

ADDITIONAL FEATURES FOR PIT MODEL

- POWER CARRIAGE FOR BUTTON OPERATED WHEELBASE ADJUSTMENT
- PIT COVERS
- COMPACT DESIGN ALLOWS FOR SMALLER PIT SIZE

SPECIFICATIONS

MAXIMUM HORSEPOWER/TORQUE	750+ HP/750+ FT LBS
MAXIMUM SPEED	200 MPH/322 KPH
DRUM DIAMETER	18 IN/45.72 CM
DRUM WIDTH	16.37 IN/41.59 CM
DRUMS	1
MAXIMUM AXLE WEIGHT	N/A
STANDARD CARRIAGE WHEELBASE MINIMUM	66 IN/167 CM
STANDARD CARRIAGE WHEELBASE MAXIMUM	84 IN/213 CM
EXTENDED CARRIAGE WHEELBASE MINIMUM	83 IN/210 CM *
EXTENDED CARRIAGE WHEELBASE MAXIMUM	102 IN/259 CM *

WHEELBASE MEASURED FROM FRONT TIRE TO REAR AXLE

**EXTENDED CARRIAGE IS OPTIONAL*

AIR REQUIREMENTS	100 PSI
OPERATING TEMP RANGE	32 TO 158 F/0 TO 70 C
TIMING ACCURACY	+/-1 MICROSECOND
DRUM SPEED ACCURACY	+/-1/100TH MPH
RPM ACCURACY	+/-1/10TH RPM 1/10TH RPM
POWER REQUIREMENTS	240 VOLT, 30 AMP, SINGLE PHASE



FOR MORE INFO VISIT: WWW.DYNOJET.COM



MODEL 250i LOAD CONTROL DYNAMOMETER

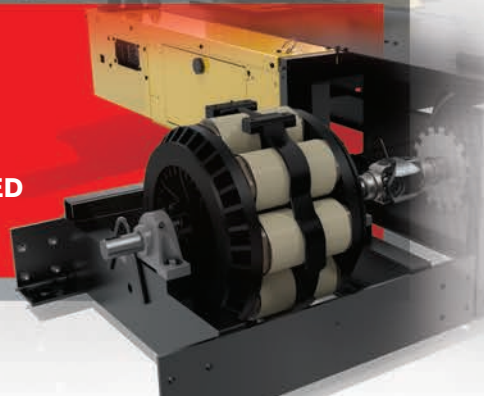
The 250i Load Control System was developed through years of experience with over 10,000+ dynamometer installations world wide. The design is easy to operate and provide the function of steady state load control.

Dynojet's Load Control System uses the latest in Eddy Current Power Absorption technology, which combines with our easy to use software, so any technician can get repeatable, consistent results. The Load Control software provides the technician with the ability to control vehicle RPM or Speed at any throttle opening. Through our exclusive closed-loop software design, the vehicle is automatically held at your pre-determined setting.

SHOWN WITH OPTIONAL FANS, POWER CARRIAGE,
POWER CLAMP AND INTEGRATED AFR-2

EDDY CURRENT LOAD ABSORPTION UNIT

CONTROL VEHICLE RPM OR SPEED
AT ANY THROTTLE OPENING.





FEATURES

ABOVE GROUND STANDARD FEATURES

- MEASURES 750+ HP / TORQUE AND UP TO 200MPH
- EDDY CURRENT LOAD ABSORPTION UNIT
- POWERCORE SOFTWARE SUITE WITH WINPEP 8 (PC, MONITOR, PRINTER, ETC. NOT INCLUDED)
- DYNOWARE RT DYNAMOMETER ELECTRONICS AND HARDWARE
- POWDER COATED CHASSIS, WHEELBASE CAPABILITY UP TO 84 IN (FROM REAR AXLE TO FRONT TIRE)
- INTEGRATED CONTROL PANEL STAND WITH CONSOLE
- IGNITION WIRE INDUCTIVE TACHOMETER PICKUP LEADS

- FRONT WHEEL LOCK
- 14 EXPANSION PORTS FOR DYNOWARE RT ACCESSORIES AND DJ-CAN DEVICES (SUCH AS POWER COMMANDER, POWER VISION, AUTOTUNE, ETC.)
- STARTER SYSTEM TO SPIN ROLLER (12V, BATTERY NOT INCLUDED)

ADDITIONAL FEATURES FOR PIT MODEL

- POWER CARRIAGE FOR BUTTON OPERATED WHEELBASE ADJUSTMENT
- PIT COVERS
- COMPACT DESIGN ALLOWS FOR SMALLER PIT SIZE

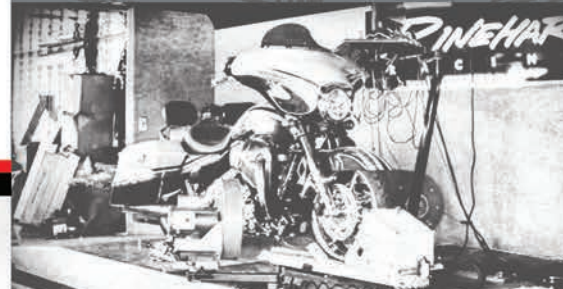
SPECIFICATIONS

MAXIMUM HORSEPOWER/TORQUE	750 HP+/750+ FT LBS
MAXIMUM SPEED	200 MPH/322 KPH
DRUM DIAMETER	18 IN/45.72 CM
DRUM WIDTH	16.37 IN/41.59 CM
DRUMS	1
MAXIMUM AXLE WEIGHT	N/A
STANDARD CARRIAGE WHEELBASE MINIMUM	66 IN/167 CM
STANDARD CARRIAGE WHEELBASE MAXIMUM	84 IN/213 CM
EXTENDED CARRIAGE WHEELBASE MINIMUM	83 IN/210 CM*
EXTENDED CARRIAGE WHEELBASE MAXIMUM	102 IN/259 CM*

WHEELBASE MEASURED FROM FRONT TIRE TO REAR AXLE

**EXTENDED CARRIAGE IS OPTIONAL*

AIR REQUIREMENTS	100 PSI
OPERATING TEMP RANGE	32 TO 158 F/0 TO 70 C
TIMING ACCURACY	+/-1 MICROSECOND
DRUM SPEED ACCURACY	+/-1/100TH MPH
RPM ACCURACY	+/-1/10TH RPM
POWER REQUIREMENTS	240 VOLT, 30 AMP, SINGLE PHASE



TOLL FREE 1-800-992-3525

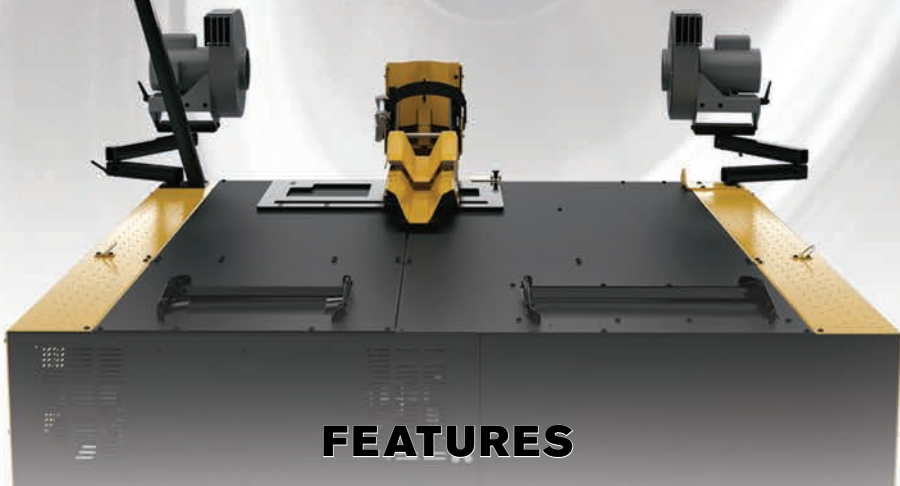
MODEL 200iX CHASSIS DYNAMOMETER

Dynojet's cutting edge engineering delivers the precise horsepower measurements a technician needs to make quick and accurate evaluations of engine and drive-train performance. This allows you to maximize your shop's potential with increased sales, service efficiency, and shop credibility. The dyno's durable, low-maintenance construction ensures that you will be investing in many years of flawless tuning and troubleshooting. By eliminating the need for engine removal, the vehicle mounting time is as little as 5 minutes.

A technician can then perform a simple test and examine the results right in the shop. Utilizing the Dynojet WinPEP software, the dyno operator can evaluate the entire drive-train condition for the purpose of routine servicing or all-out performance.

THE 200iX DYNAMOMETER ADDS AN EXTRA DRUM AND SLIDING CARRIAGE TO ACCOMMODATE ATV'S, TRIKES, SIDE-BY-SIDES, AND MOTORCYCLES.

SHOWN WITH OPTIONAL
FANS, MONITOR TRAY AND
INTEGRATED AFR-2



FEATURES

ABOVE GROUND STANDARD FEATURES

- ACCOMMODATES MOTORCYCLES AND MOST OTHER POWERSPORTS PLATFORMS (ATV'S, SIDE-BY-SIDES, GO-KARTS, AND TRIKES)
- MEASURES 750+ HP / TORQUE AND UP TO 200MPH
- POWERCORE SOFTWARE SUITE WITH WINPEP 8 (PC, MONITOR, PRINTER, ETC. NOT INCLUDED)
- DYNOWARE RT DYNAMOMETER ELECTRONICS AND HARDWARE
- 14 EXPANSION PORTS FOR DYNOWARE RT ACCESSORIES AND DJ-CAN DEVICES (SUCH AS POWER COMMANDER, POWER VISION, AUTOTUNE, ETC.)
- POWDER COATED CHASSIS, WHEELBASE CAPABILITY UP TO 84 IN (FROM REAR AXLE TO FRONT TIRE)

- INTEGRATED CONTROL PANEL STAND WITH CONSOLE
- IGNITION WIRE INDUCTIVE TACHOMETER PICKUP LEADS
- FRONT WHEEL LOCK
- STARTER SYSTEM TO SPIN ROLLER (12V, BATTERY NOT INCLUDED)

ADDITIONAL FEATURES FOR PIT MODEL

- POWER CARRIAGE FOR BUTTON OPERATED WHEELBASE ADJUSTMENT
- PIT COVERS
- COMPACT DESIGN ALLOWS FOR SMALLER PIT SIZE

SPECIFICATIONS

MAXIMUM HORSEPOWER/TORQUE	750+ HP/750+ FT LBS
MAXIMUM SPEED	200 MPH/322 KPH
DRUM DIAMETER	18 IN/45.72 CM
DRUM WIDTH	16.37 IN/41.59 CM
DRUMS	2
MAXIMUM AXLE WEIGHT	N/A
STANDARD CARRIAGE WHEELBASE MINIMUM	66 IN/167 CM
STANDARD CARRIAGE WHEELBASE MAXIMUM	84 IN/213 CM
EXTENDED CARRIAGE WHEELBASE MINIMUM	83 IN/210 CM *
EXTENDED CARRIAGE WHEELBASE MAXIMUM	102 IN/259 CM *

WHEELBASE MEASURED FROM FRONT TIRE TO REAR AXLE

**EXTENDED CARRIAGE IS OPTIONAL*

AIR REQUIREMENTS	100 PSI
OPERATING TEMP RANGE	32 TO 158 F/O TO 70 C
TIMING ACCURACY	+/-1 MICROSECOND
DRUM SPEED ACCURACY	+/-1/100TH MPH
RPM ACCURACY	+/-1/10TH RPM

STANDARD REAR AXLE WIDTH

INNER	23 IN/58.4 CM
OUTER	61 IN/155 CM

POWER REQUIREMENTS	240 VOLT, 30 AMP, SINGLE PHASE
--------------------	--------------------------------



FOR MORE INFO VISIT: WWW.DYNOJET.COM

MODEL 250iX LOAD CONTROL DYNAMOMETER

The 250iX Powersports Chassis Dynamometer provides the ultimate in powersports dyno tuning/testing capability. With a 61 inch total drum width and sliding carriage, the 250iX can handle most UTV's, ATV's, Karts, Trikes and Motorcycles. Available for above-ground or pit installation.

SHOWN WITH OPTIONAL FANS, AND INTEGRATED AFR-2.

EDDY CURRENT LOAD ABSORPTION UNIT

CONTROL VEHICLE RPM OR SPEED
AT ANY THROTTLE OPENING.

TOLL FREE 1-800-992-3525

FEATURES

ABOVE GROUND STANDARD FEATURES

- ACCOMMODATES MOTORCYCLES AND MOST OTHER POWERSPORTS PLATFORMS (ATV'S, SIDE-BY-SIDES, GO-KARTS, AND TRIKES)
- MEASURES UP TO 750+ HP AND 200MPH
- EDDY CURRENT LOAD ABSORPTION UNIT
- POWERCORE SOFTWARE SUITE WITH WINPEP 8 (PC, MONITOR, PRINTER, ETC. NOT INCLUDED)
- DYNOWARE RT DYNAMOMETER ELECTRONICS AND HARDWARE
- 14 EXPANSION PORTS FOR DYNOWARE RT ACCESSORIES AND DJ-CAN DEVICES (SUCH AS POWER COMMANDER, POWER VISION, AUTOTUNE, ETC.)

- POWDER COATED CHASSIS, WHEELBASE CAPABILITY UP TO 84 IN (FROM REAR AXLE TO FRONT TIRE)
- INTEGRATED CONTROL PANEL STAND WITH CONSOLE
- IGNITION WIRE INDUCTIVE TACHOMETER PICKUP LEADS
- FRONT WHEEL LOCK
- STARTER SYSTEM TO SPIN ROLLER (12V, BATTERY NOT INCLUDED)

ADDITIONAL FEATURES FOR PIT MODEL

- POWER CARRIAGE FOR BUTTON OPERATED WHEELBASE ADJUSTMENT
- PIT COVERS
- COMPACT DESIGN ALLOWS FOR SMALLER PIT SIZE

SPECIFICATIONS

MAXIMUM HORSEPOWER/TORQUE	750+ HP/750 +FT LBS
MAXIMUM SPEED	200 MPH/322 KPH
DRUM DIAMETER	18 IN/45.72 CM
DRUM WIDTH	16.37 IN/41.59 CM
DRUMS	2
MAXIMUM AXLE WEIGHT	N/A
STANDARD CARRIAGE WHEELBASE MINIMUM	66 IN/167 CM
STANDARD CARRIAGE WHEELBASE MAXIMUM	84 IN/213 CM
EXTENDED CARRIAGE WHEELBASE MINIMUM	83 IN/210 CM *
EXTENDED CARRIAGE WHEELBASE MAXIMUM	102 IN/259 CM*

WHEELBASE MEASURED FROM FRONT TIRE TO REAR AXLE

**EXTENDED CARRIAGE IS OPTIONAL*

AIR REQUIREMENTS	100 PSI
OPERATING TEMP RANGE	32 TO 158 F/0 TO 70 C
TIMING ACCURACY	+/-1 MICROSECOND
DRUM SPEED ACCURACY	+/-1/100THMPH
RPM ACCURACY	+/-1/10TH RPM

STANDARD REAR AXLE WIDTH

INNER	23 IN/58.4 CM
OUTER	61 IN/155 CM

IXW REAR AXLE WIDTH

INNER	35 IN/89 CM
OUTER	73 IN/185.4 CM

POWER REQUIREMENTS	240 VOLT, 30 AMP, SINGLE PHASE
--------------------	--------------------------------

AVAILABLE IN A WIDER WIDTH
The 250iXW is available with 73" total drum width.
Pit installation only



SPECIFICATIONS

MAX POWER	25KW (33.5HP)
MAX TORQUE	45 NM (33.5 LB-FT)
MAX SPEED	175 KM/HR (109 MPH)
LENGTH UNFOLDED WITH RAMP DOWN	132 IN/335 CM
LENGTH WITH RAMP UP	99 IN/251 CM
TOTAL LENGTH FOLDED	21 IN/533 CM
TOTAL WIDTH FOLDED	24 IN/61 CM
TOTAL WIDTH UNFOLDED	34 IN/86 CM
TOTAL HEIGHT FOLDED	83 IN/211 CM
TOTAL HEIGHT UNFOLDED	24 IN/61 CM
WEIGHT	437 LBS/198.22 KG
MINIMUM AND MAXIMUM WHEELBASE	64-74 IN/152-188 CM
<i>WHEELBASE MEASURED FROM FRONT TIRE TO REAR AXLE</i>	
BRAKE TYPE	SPRING TYPE MECHANICAL BAND
POWER REQUIREMENTS	110-220 VAC



SD12 SCOOTER DYNAMOMETER

The SD12 has a clever fold-up design with rollers, enabling it to be easily moved for use and storage, maximizing space inside the workshop.

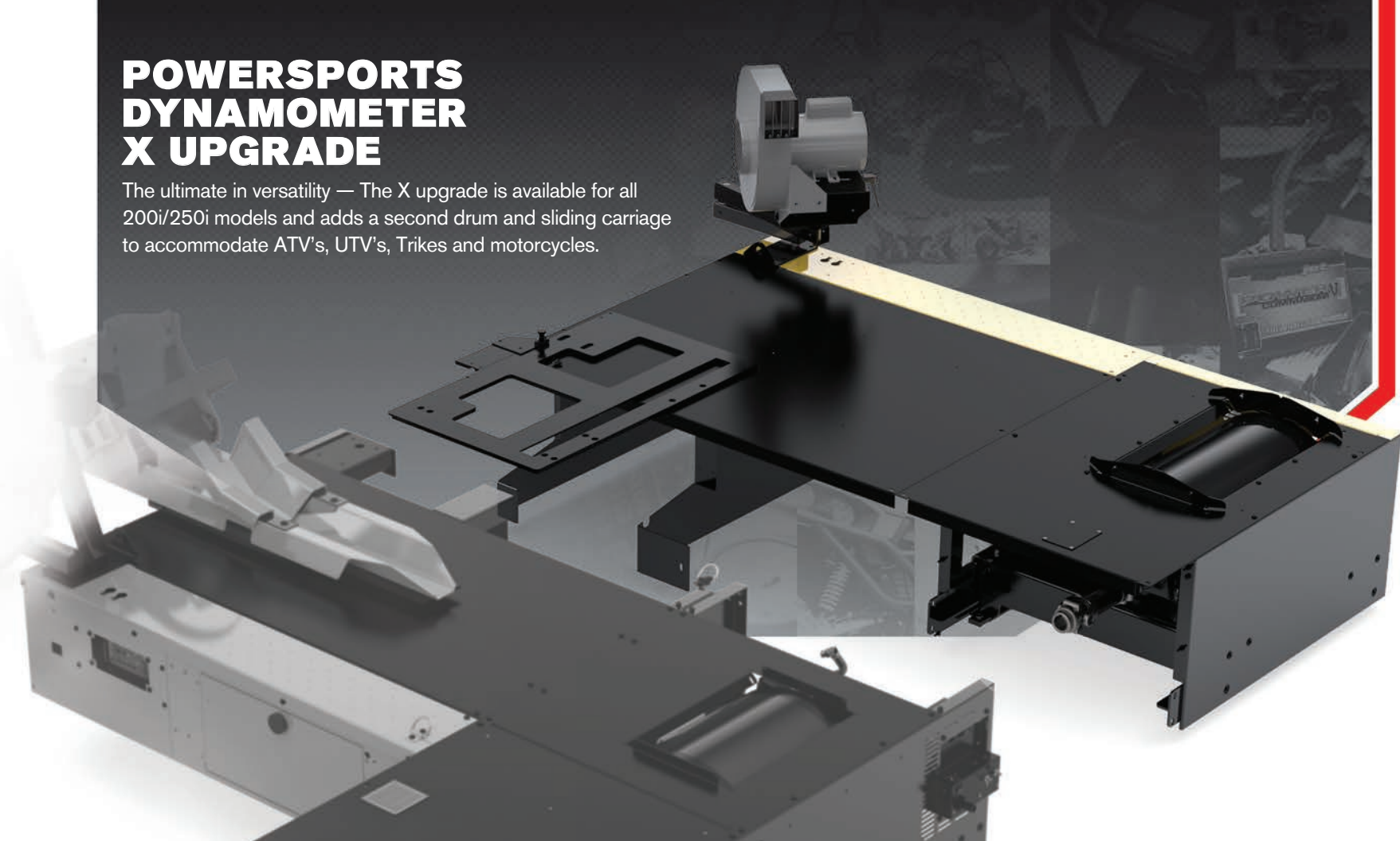
The SD12 comes with a folding ramp and foot activated brake as standard features and can accommodate wheelbases from 60 to 74in. The SD12 uses our proven WINPEP 8 software and DynoWare RT electronics for accurate and repeatable measurement of horsepower, torque, and speed. The Dynojet Air/Fuel Ratio Monitor can be used with the SD12.



FOR MORE INFO VISIT: WWW.DYNOJET.COM

POWERSPORTS DYNAMOMETER X UPGRADE

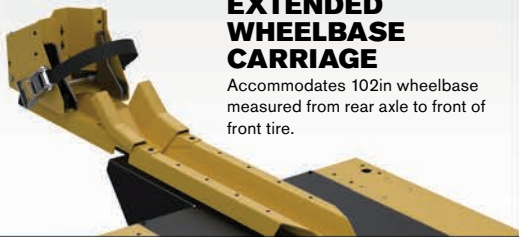
The ultimate in versatility — The X upgrade is available for all 200i/250i models and adds a second drum and sliding carriage to accommodate ATV's, UTV's, Trikes and motorcycles.



POWERSPORTS
UPGRADE AND OPTIONS

EXTENDED WHEELBASE CARRIAGE

Accommodates 102in wheelbase measured from rear axle to front of front tire.



POWER CARRIAGE

Motor driven carriage controlled from control panel for adjusting wheelbase without stepping off the motorcycle.



POWER WHEEL CLAMP

Motor driven wheel clamp controlled through the control panel for securing front wheel without stepping off the motorcycle.



PRIMARY FOLDING RAMP

Gas strut assisted folding ramp bolts directly to the dynamometer.



SECONDARY FOLDING RAMP

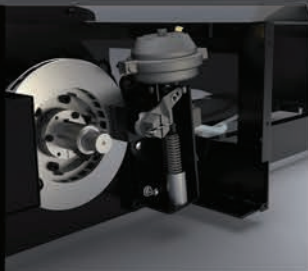
Supplemental ramp for X model dynos (both ramps required).



AIR BRAKE

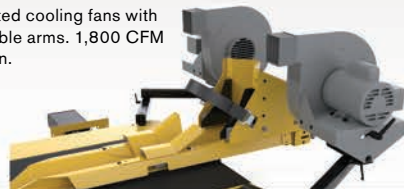
Air actuated disk brake used for slowing drum.

Not necessary with 250i series dynos.



DUAL COOLING FAN SYSTEM

Integrated cooling fans with adjustable arms. 1,800 CFM each fan.



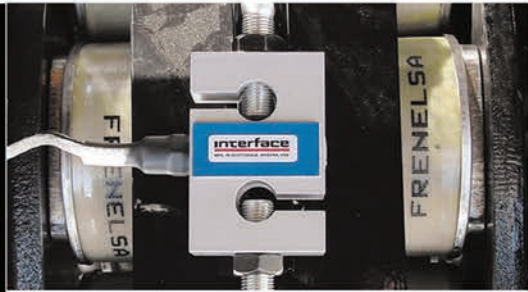
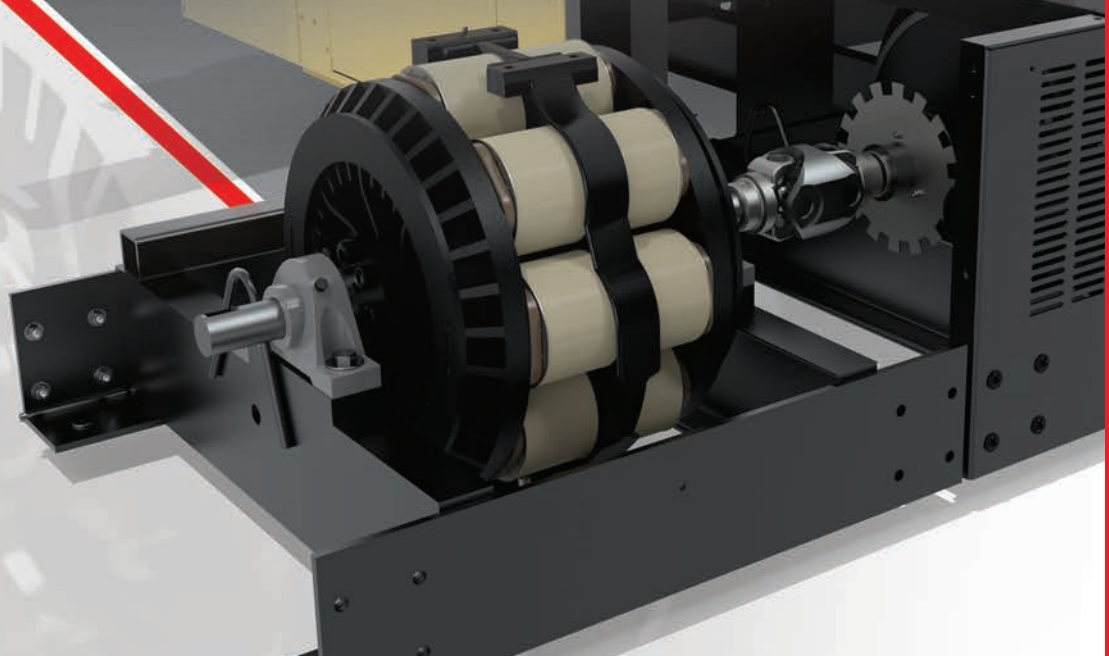
MONITOR TRAY

Bolts onto the control panel arm and holds the monitor, keyboard and mouse.



EDDY CURRENT LOAD ABSORPTION UNIT

The Eddy Current Load Absorption Unit can be upgraded to any Dynojet inertia model, such as the 200/200i/200iX, and enables the ability to perform loaded tests such as closed-loop RPM step tests when tuning fuel-injection with a Power Commander or Power Vision.



TORQUE CELL MODULE

Measures real-time torque, and allows sweep, step and custom load simulation tests.





AFR-2 (DUAL AIR/FUEL SYSTEM)

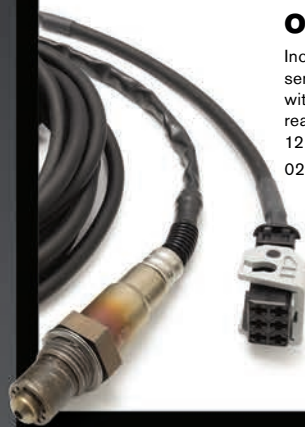
AFR-2 MODULE MEASURES UP TO TWO AIR/FUEL RATIO READINGS SIMULTANEOUSLY!

The AFR-2 has two wide band O₂ sensor inputs so you can sample two air/fuel ratios at the same time for measuring V-Twin engines. The AFR-2 uses the DJ-CAN system, which allows you to daisy-chain multiple AFR-2 modules to read as many AFR's as you need. The AFR-2 houses the Gen4 air pump system and comes standard with one O₂ sensor. Additional sensors can be purchased at a low cost.



IR-TIRE TEMP SENSOR KIT

Includes 1 0-500F sensor, magnetic base and mounting stand.



O₂ SENSOR KITS

Includes one wideband O₂ sensor with harness for use with AFR-2 for dual air/fuel readings. Available in a 6ft or 12 ft harness length.

O₂ Sensor Test Gas Kit available.

ANALOG CHANNEL ACCESSORIES

DynoWare RT comes standard with four (4) analog inputs for 0-5v sensors. Sensor kits are available for connecting Dynojet analog sensors or customer supplied sensors to DynoWare RT.



Analog Sensor Cable Kit — Includes four (4) complete harnesses for connecting up to four customer supplied 0-5v analog sensors to DynoWare RT.



-14.7-45psi Pressure Sensor Kit — Includes one (1) sensor and harness
0-100psi Pressure Sensor Kit — Includes one (1) sensor and harness.



H-D FUEL TAP

Dynojet's H-D Fuel Tap is a system for fuel injected Harley-Davidson® motorcycles designed to measure and synchronize fuel pressure readings with other data while conducting dyno tests. Utilizes a precision 0-100 psi pressure transducer and quick disconnects for fast, easy installation and accurate results. Stop tuning around a "problem area" and ensure the fuel system is performing as designed.



ON-BOARD DIAGNOSTIC CABLES

These cables allow the end user to plug into the On Board Diagnostic connector of the motorcycle to read and/or clear codes and view certain channels. An over the counter OBD diagnostic tool is required. Make sure this tool is CAN compatible use with Dynojet OBDII Data-Link to input vehicle data into WinPEP8

OBDII DATA-LINK INTERFACE

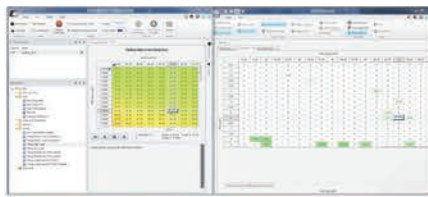
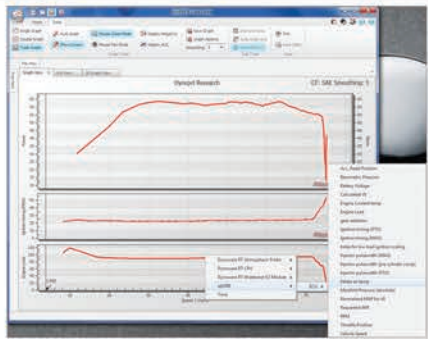
Use the Dynojet OBDII Data-Link with the Dynojet On-Board Diagnostic Cables to use vehicle ECM data real-time in WinPEP 8.



INDUCTIVE RPM CONNECTION KIT

This new harness kit aids dyno operators in establishing engine RPM signals with select motorcycles. Each harness uses OEM style connectors, plugs in-line with the stock ignition system, and the non-loomed wiring makes it easy for the Dynojet Inductive RPM to clamp onto. Works with several motorcycles: Denso coil ignitions, Ducati, KTM, Polaris, Can-Am, BMW, Aprilia and Harley-Davidson®.

FOR MORE INFO VISIT: WWW.DYNOJET.COM



DJ-CAN PRODUCTS SUCH AS THE POWER COMMANDER V, POWER VISION, AND WIDEBAND2 CAN BE PLUGGED DIRECTLY INTO DYNOWARE RT.

This allows you to view and sample all available channels on the device. This includes; injector duty cycle, throttle position, air/fuel ratio (when equipped with AutoTune) and more! You can use engine RPM from a Power Commander V as your primary dyno RPM so you don't have to use the inductive RPM cable!



H-D DATA LINK

Connect any Delphi equipped Harley-Davidson® (CAN & J1850) to DynoWare RT to read and sample live data direct from the bike! Whether you are making EFI calibrations, diagnosing a problem or simply getting a horsepower reading, the H-D Data Link gives you more data such as volumetric efficiency, spark advance, cylinder temp, and more.

The Power Vision Tuner Kit can also function as the H-D Data Link





POWER VISION AUTOMATED TUNE LICENSE PROGRAM SAVES TIME, KEEPS COST LOW, AND MAXIMIZES PROFIT.

Acquiring and loading a Tune License into your Power Vision is quicker and easier than before. Simply launch WinPV, click on the PV Online icon, and in a few steps you're ready to tune. If you need additional Tune Licenses, log into your account and purchase them. Every step of the process is now handled online, at your convenience.

Use one Power Vision to tune multiple bikes! There is NO limit to the amount of ECM's that can be tuned with a single Power Vision. Each bike to be tuned requires the purchase of a Tune License, however, the Tune License allows you to continue to flash tunes to each licensed vehicle as many times as you'd like.



POWER VISION TUNER KIT

Dynojet offers the Power Vision Tuner Kit that includes everything you need to start flash tuning Harley-Davidson® motorcycles.

This comprehensive kit is perfect for small independent shops or franchised dealers looking to minimize the headaches and maximize profits. Included is a Power Vision, AutoTune Pro Module, and all necessary cables in order to tune J1850 or CAN models.

STEALTH EXTRACTION INTERFACE KIT

Tired of welding bungs, destroying baffles, or otherwise finding a way to get an accurate exhaust gas sample for tuning purposes?

Dynojet has the answer with the Stealth Extraction Interface Kit. Includes professional grade Riv-Nut tool, drill bit, 50 pieces of consumables (bolts, washers, Riv-Nuts, etc), specialty bolts, and billet manifold interfaces.



TOLL FREE 1-800-992-3525

DynoWare RT



DYNOWARE RT

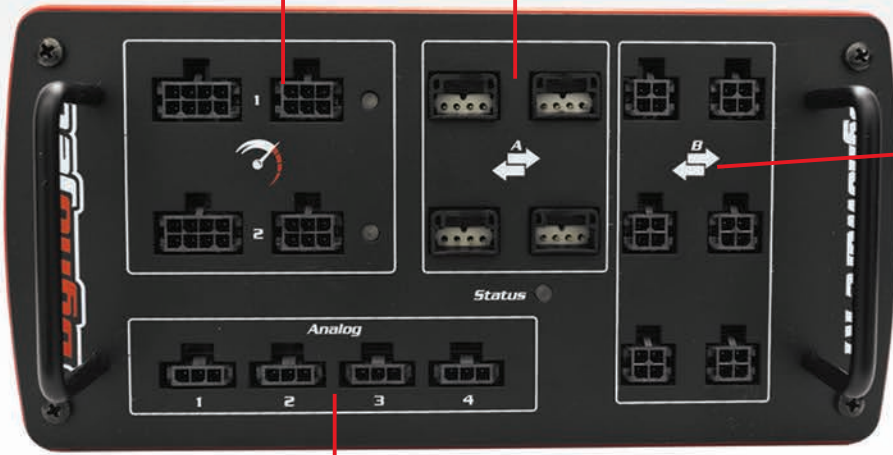
DynoWare RT is the next generation of Dynojet dynamometer electronics and provides dyno owners with several features such as: high-speed Ethernet communications to PC, wireless network capability, multiple expansion ports for current and future upgrades, updateable firmware/software via online, built-in true 0-5v Analog Channels and more. The dyno's configuration file is now embedded inside the DynoWare RT module, so now you can simply connect to any PC that has PowerCore installed. DynoWare comes standard with new Dynojet dynamometers and is available as an upgrade for existing Dynojet models.

FEATURES

TWO INDUCTIVE RPM INPUTS (UP TO 30,000 RPM).

Includes two (2) primary and two (2) secondary inductive RPM cables for use with various ignition types including coil on plug.

OPTICAL RPM INPUTS (UP TO 30,000 RPM). For use with Dynojet Optical RPM accessory (not included).



FOUR DJ-CAN (DYNOJET CONTROLLER AREA NETWORK) EXPANSION PORTS

To connect Dynojet performance electronics such as Power Commander V and WideBand2.

SIX DYNOWARE EXPANSION PORTS

Allows for easy to access connections for the pendant, atmospheric measurement device and other devices.

FOUR INDEPENDENT 0-5V ANALOG INPUTS.

Accessory plug-and-play Dynojet Sensor Kits available for measuring pressure (boost or fuel). Analog Sensor Cable Kit also available to connect customer supplied 0-5 analog sensors to DynoWare RT. Sensors not included.

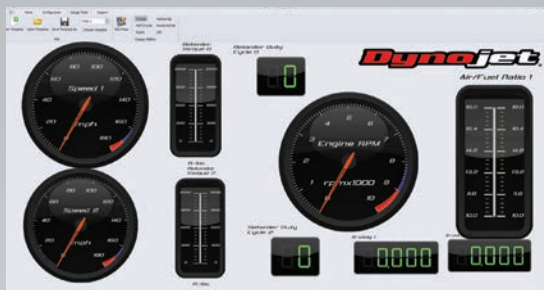
ETHERNET COMMUNICATIONS

WIRELESS NETWORK CAPABILITY Connect DynoWare RT to a wireless router to control the dyno and Power Core using any laptop, desktop or tablet PC on the network. Update firmware and software through a internet network.

TWO INFRARED TEMPERATURE SENSOR INPUTS.

POWERCORE SOFTWARE SUITE WITH WINPEP 8 DYNO CONTROL, DATA CENTER AND C3 TUNING SOFTWARE INCLUDED WITH DYNOWARE RT.





SELECTABLE AIR/FUEL DATA SOURCE - DYNOWARE RT AFR-2 OR DJ-CAN DEVICES



POWER CORE SOFTWARE SUITE



PowerCore is a PC based application that provides Dynojet dyno owners with the most advanced tuning software platform available in the industry! Control the dyno, analyze data, adjust/create calibrations and maps for Dynojet products and utilize real-time on-board data from vehicles running on the dyno.

WinPEP8



WINPEP 8 DYNO CONTROL

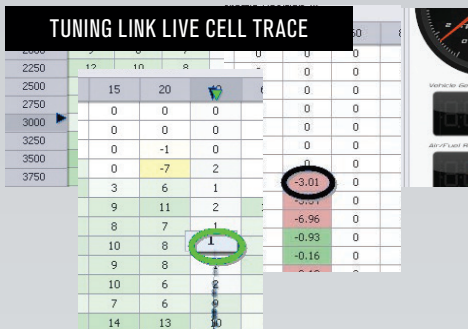
Connects PowerCore to DynoWare RT; shows data live on gauges, starts/stops sampling, and sets up load control and other dyno specific functions.

- SELECTABLE RPM SOURCE USED FOR LOGGING/LOAD CONTROL – INDUCTIVE, OR DJ-CAN DEVICES SUCH AS THE POWER COMMANDER V.
- CHANNEL SUPPORT FOR DJ-CAN DEVICES – READ AND SAMPLE LIVE DATA FROM THE VEHICLE WHILE USING A POWER COMMANDER V OR POWER VISION.
- EDITABLE GAUGE SCREEN WITH USER DEFINED DATA CHANNEL SELECTION, SCALING AND MORE.

TOLL FREE 1-800-992-3525



CONFIGURE – CALIBRATE – CONTROL



C3 TUNING SOFTWARE (CONFIGURE-CALIBRATE-CONTROL)

DYNOJET'S C3 SOFTWARE INTERFACES THE DYNAMOMETER WITH OTHER DYNOJET PRODUCTS SUCH AS POWER COMMANDER, POWER VISION, AND POWER VISION CX. THIS TAKES DYNO TUNING TO A NEW LEVEL!

- CREATE CALIBRATIONS & COMPARE THEM SIDE BY SIDE
- CONFIGURE POWER COMMANDER ADVANCED MAPS FOR 2 OR 4 CYLINDER ENGINES TO USE DUAL AUTOTUNE
- EDIT & FLASH POWER VISION AND POWER VISION CX CALIBRATIONS DIRECT TO THE ECM
- AUTOMATICALLY SYNCs CHANNEL AXIS WITH DATA CENTER FOR EASE OF TUNING
- DATA LOG CHANNELS AND DISPLAY THEM IN GRAPH FORM INSIDE DATA CENTER
- AUTOMATIC ONLINE UPDATES

DYNOJET'S PROPRIETARY TUNING LINK SOFTWARE IS INCLUDED IN C3!

- CREATE MAPS WITH UP TO 30 THROTTLE POSITION COLUMNS AND ANY VALUE DESIRED.
- PERCENTAGE CORRECTION – PICK A DESIRED ALLOWED TARGET ERROR PERCENTAGE (FOR EXAMPLE 2% OF YOUR TARGET AFR) FOR FASTER AND MORE EFFICIENT FUEL MAPPING.
- AUTOTUNE FUNCTION – SIMPLY RIDE THE BIKE ON THE DYNO FOR NON CELL-SPECIFIC MAPPING AND USE TUNING LINK TO TUNE ABRUPT THROTTLE TRANSITIONS AND OTHER RIDING CONDITIONS.
- MAP MULTIPLE CYLINDERS SIMULTANEOUSLY
- DESIGNATE A TARGET AFR FOR EVERY MAP CELL

FOR MORE INFO VISIT: WWW.DYNOJET.COM

APPROVED POWER COMMANDER TUNING CENTERS

THE POWER COMMANDER HAS BEEN THE #1 CHOICE FOR EFI TUNING EVER SINCE FUEL INJECTION BECAME AVAILABLE AS ORIGINAL EQUIPMENT BY POWERSPORTS MANUFACTURERS.

This course certifies Dynojet Dynamometer owners (250 model and above) as Dynojet Approved Power Commander Tuning Centers. It consists of 3-days of advanced Power Commander training and is a combination of classroom and hands-on dyno time. The course covers all models of Power Commanders and their accessories. Learn everything from proper installation to making custom maps using a Dynojet dyno with Power Commander and dyno software.



AUTHORIZED POWER COMMANDER DEALERS

This ½ day training course available in your area or at your location (contact Dynojet for availability). This course provides dealers with all of the information they need regarding Power Commander sales and support.



CERTIFIED POWER VISION TUNING CENTERS

This 3-day training course held at Dynojet Research in Las Vegas, Nevada includes EFI theory and operation for expert EFI calibrating, Power Vision WinPV software, AutoTune Basic & Pro and custom EFI map development using the Power Vision on the dynamometer. Certified Power Vision Tuning Centers are listed online and are the only Dynojet approved tuning centers for customers seeking custom Power Vision tunes created on a Dynojet dynamometer.



CERTIFIED POWER VISION DEALERS

This ½ day training course provides all the information needed regarding Power Vision sales and support. Certified Power Vision Dealers are listed online as Approved Locations that can thoroughly support Power Vision sales.

DYNAMOMETER TRAINING

On-Site Dynamometer Training Available. Dynojet provides two day on-site training for an additional fee. For more info on training and certification contact us at: 1-800-992-3525/training@dynojet.com

DYNOJET DYNAMOMETER REQUIREMENTS

PC REQUIREMENTS:

PC not included. Minimum specifications should be: Windows 7 or higher, Dual Core Processor, 2.0 GHz or faster, 4GB of system RAM, 100GB or larger hard drive (54MB required for program, 1280x1024 (SXGA) resolution or higher monitor/graphics card, 1 free 10/100Mbps RJ45 ethernet port, CD ROM drive, printer, if prints needed

POWER REQUIREMENTS:

POWERSPORTS DYNAMOMETERS

200i 240 VOLT, 30 AMP, SINGLE PHASE
250i 240 VOLT, 30 AMP, SINGLE PHASE
250iX 240 VOLT, 30 AMP, SINGLE PHASE

AUTOMOTIVE DYNAMOMETERS

224x/424x: 120 VOLT, 15AMP, & SINGLE PHASE
224xLC: 120 VOLT, 15AMP, SINGLE PHASE AND
240 VOLT, 30AMP, SINGLE PHASE
424xLC²: 120 VOLT, 15AMP, SINGLE PHASE AND
(2X) 240 VOLT, 30AMP, SINGLE PHASE

ROTARY 4 POST LIFT

240 Volt, 20 Amp, Single Phase

MOBILE DYNAMOMETERS

10kW or larger generator, depending on loads other than dyno equipment. Have all power from same source (all from wall or all from generator).
120 Volt, 15 Amp, Single Phase for computer, monitor, printer, and peripherals.

DYNOJET AIR FUEL RATIO MONITOR/WIDEBAND

Requires 100psi, 5CFM Air Compressor
5CFM Air Compressor

FORKLIFT REQUIREMENTS:

424x/424xLC²

6000LB FORKLIFT WITH 6' FORKS

424x/424xLC²

6000LB FORKLIFT WITH 6' FORKS

200i/250i/250iX

2500LB FORKLIFT

DYNOJET RESEARCH

2191 Mendenhall Drive
North Las Vegas, Nevada 89081

DYNAMOMETER SALES AND TECHNICAL SUPPORT:
TEL 800-992-3525 FAX 702-399-4821

INTERNATIONAL SALES:
TEL 702-673-4010 FAX 702-399-4821

DYNOJET GERMANY

Neustr 44
47809 Krefeld, Germany
TEL +49 (0) 2151535846
FAX +49 (0) 2151535847

DYNOJET RESEARCH BV

Pieter Zeemanstraat 37
6603 AV Wijchen, The Netherlands
TEL +31 (0)24-645 40 28
FAX +31 (0)24-645 60 67

WWW.DYNOJET.COM